

Union parts

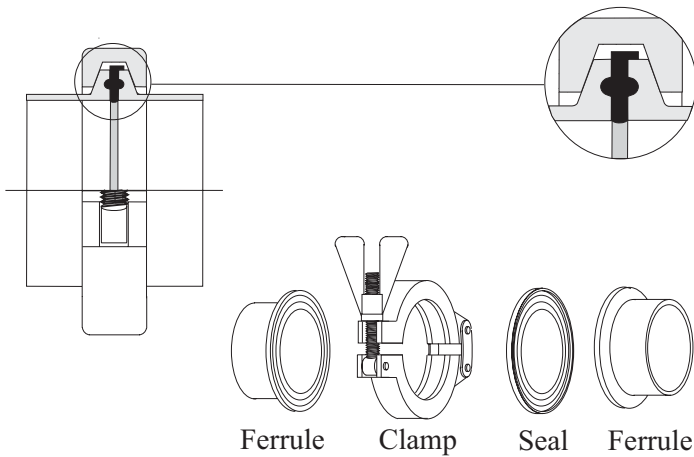
Data sheets

Clamp

DIN

IDF

RJT

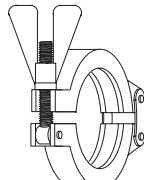
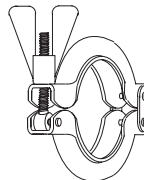



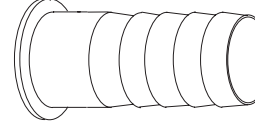

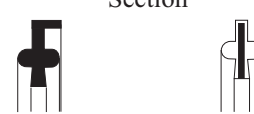


The clamp union originated in America and is the standard used in the Pharmaceutical industry.

The union consists of two identical "ferrule" halves between which is a seal, profiled to give a true crevice free bore. The assembly is secured together by an outer clamp, which when tightened with the wing nut, compresses the seal ring by acting on the back tapered faces of the ferrule flanges.

The assembly can be dismantled without the aid of tools.

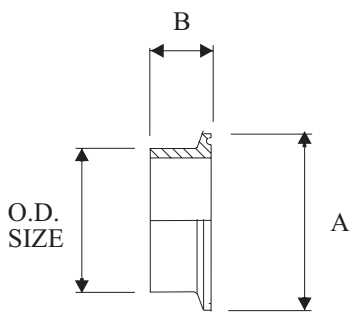
Clamp union parts conform generally to B.S. 4825 part 3

<p>Clamp - heavy duty</p>  <p>304 st.st.</p>	<table border="1"> <thead> <tr> <th>Size</th> <th>Code</th> </tr> </thead> <tbody> <tr> <td>1/2" & 3/4"</td> <td>CL07</td> </tr> <tr> <td>1" & 1.1/2"</td> <td>CL15</td> </tr> <tr> <td>2"</td> <td>CL20</td> </tr> <tr> <td>2.1/2"</td> <td>CL25</td> </tr> <tr> <td>3"</td> <td>CL30</td> </tr> <tr> <td>4"</td> <td>CL40</td> </tr> </tbody> </table>	Size	Code	1/2" & 3/4"	CL07	1" & 1.1/2"	CL15	2"	CL20	2.1/2"	CL25	3"	CL30	4"	CL40	<p>Clamp - pressed</p>  <p>304 st.st.</p>	<table border="1"> <thead> <tr> <th>Size</th> <th>Code</th> </tr> </thead> <tbody> <tr> <td>1"</td> <td>CLP15</td> </tr> <tr> <td>1.1/2"</td> <td>CLP15</td> </tr> <tr> <td>2"</td> <td>CLP20</td> </tr> <tr> <td>2.1/2"</td> <td>CLP25</td> </tr> <tr> <td>3"</td> <td>CLP30</td> </tr> <tr> <td>4"</td> <td>CLP40</td> </tr> </tbody> </table>	Size	Code	1"	CLP15	1.1/2"	CLP15	2"	CLP20	2.1/2"	CLP25	3"	CLP30	4"	CLP40																																				
Size	Code																																																																		
1/2" & 3/4"	CL07																																																																		
1" & 1.1/2"	CL15																																																																		
2"	CL20																																																																		
2.1/2"	CL25																																																																		
3"	CL30																																																																		
4"	CL40																																																																		
Size	Code																																																																		
1"	CLP15																																																																		
1.1/2"	CLP15																																																																		
2"	CLP20																																																																		
2.1/2"	CLP25																																																																		
3"	CLP30																																																																		
4"	CLP40																																																																		
<p>Ferrule - standard</p>  <p>316L st.st.</p>	<table border="1"> <thead> <tr> <th>Size</th> <th>Code</th> </tr> </thead> <tbody> <tr> <td>3/4"</td> <td>CF07</td> </tr> <tr> <td>1"</td> <td>CF10</td> </tr> <tr> <td>1.1/2"</td> <td>CF15</td> </tr> <tr> <td>2"</td> <td>CF20</td> </tr> <tr> <td>2.1/2"</td> <td>CF25</td> </tr> <tr> <td>3"</td> <td>CF30</td> </tr> <tr> <td>4"</td> <td>CF40</td> </tr> </tbody> </table>	Size	Code	3/4"	CF07	1"	CF10	1.1/2"	CF15	2"	CF20	2.1/2"	CF25	3"	CF30	4"	CF40	<p>Ferrule - blank</p>  <p>316L st.st.</p>	<table border="1"> <thead> <tr> <th>Size</th> <th>Code</th> </tr> </thead> <tbody> <tr> <td>1/2" & 3/4"</td> <td>CB07</td> </tr> <tr> <td>1" & 1.1/2"</td> <td>CB15</td> </tr> <tr> <td>2"</td> <td>CB20</td> </tr> <tr> <td>2.1/2"</td> <td>CB25</td> </tr> <tr> <td>3"</td> <td>CB30</td> </tr> <tr> <td>4"</td> <td>CB40</td> </tr> </tbody> </table>	Size	Code	1/2" & 3/4"	CB07	1" & 1.1/2"	CB15	2"	CB20	2.1/2"	CB25	3"	CB30	4"	CB40																																		
Size	Code																																																																		
3/4"	CF07																																																																		
1"	CF10																																																																		
1.1/2"	CF15																																																																		
2"	CF20																																																																		
2.1/2"	CF25																																																																		
3"	CF30																																																																		
4"	CF40																																																																		
Size	Code																																																																		
1/2" & 3/4"	CB07																																																																		
1" & 1.1/2"	CB15																																																																		
2"	CB20																																																																		
2.1/2"	CB25																																																																		
3"	CB30																																																																		
4"	CB40																																																																		
<p>Ferrule - long</p>  <p>316L st.st.</p>	<table border="1"> <thead> <tr> <th>Size</th> <th>Code</th> </tr> </thead> <tbody> <tr> <td>1/2"</td> <td>CF05L</td> </tr> <tr> <td>1"</td> <td>CF10L</td> </tr> <tr> <td>1.1/2"</td> <td>CF15L</td> </tr> <tr> <td>2"</td> <td>CF20L</td> </tr> <tr> <td>2.1/2"</td> <td>CF25L</td> </tr> <tr> <td>3"</td> <td>CF30L</td> </tr> <tr> <td>4"</td> <td>CF40L</td> </tr> </tbody> </table>	Size	Code	1/2"	CF05L	1"	CF10L	1.1/2"	CF15L	2"	CF20L	2.1/2"	CF25L	3"	CF30L	4"	CF40L	<p>Hose ferrule</p>  <p>316L st.st.</p>	<table border="1"> <thead> <tr> <th>Size</th> <th>Code</th> </tr> </thead> <tbody> <tr> <td>1"</td> <td>CH10</td> </tr> <tr> <td>1.1/2"</td> <td>CH15</td> </tr> <tr> <td>2"</td> <td>CH20</td> </tr> <tr> <td>2.1/2"</td> <td>CH25</td> </tr> <tr> <td>3"</td> <td>CH30</td> </tr> <tr> <td>4"</td> <td>CH40</td> </tr> </tbody> </table>	Size	Code	1"	CH10	1.1/2"	CH15	2"	CH20	2.1/2"	CH25	3"	CH30	4"	CH40																																		
Size	Code																																																																		
1/2"	CF05L																																																																		
1"	CF10L																																																																		
1.1/2"	CF15L																																																																		
2"	CF20L																																																																		
2.1/2"	CF25L																																																																		
3"	CF30L																																																																		
4"	CF40L																																																																		
Size	Code																																																																		
1"	CH10																																																																		
1.1/2"	CH15																																																																		
2"	CH20																																																																		
2.1/2"	CH25																																																																		
3"	CH30																																																																		
4"	CH40																																																																		
<p>Seal</p>  <p>Section</p>  <p>Rubber PTFE/viton</p>	<table border="1"> <thead> <tr> <th colspan="2">EPDM</th> <th colspan="2">Silicon</th> <th colspan="2">Viton</th> <th colspan="2">PTFE/viton</th> </tr> <tr> <th>Size</th> <th>Code</th> <th>Size</th> <th>Code</th> <th>Size</th> <th>Code</th> <th>Size</th> <th>Code</th> </tr> </thead> <tbody> <tr> <td>1"</td> <td>CS10E</td> <td>1"</td> <td>CS10S</td> <td>1"</td> <td>CS10V</td> <td>1"</td> <td>CS10P</td> </tr> <tr> <td>1.1/2"</td> <td>CS15E</td> <td>1.1/2"</td> <td>CS15S</td> <td>1.1/2"</td> <td>CS15V</td> <td>1.1/2"</td> <td>CS15P</td> </tr> <tr> <td>2"</td> <td>CS20E</td> <td>2"</td> <td>CS20S</td> <td>2"</td> <td>CS20V</td> <td>2"</td> <td>CS20P</td> </tr> <tr> <td>2.1/2"</td> <td>CS25E</td> <td>2.1/2"</td> <td>CS25S</td> <td>2.1/2"</td> <td>CS25V</td> <td>2.1/2"</td> <td>CS25P</td> </tr> <tr> <td>3"</td> <td>CS30E</td> <td>3"</td> <td>CS30S</td> <td>3"</td> <td>CS30V</td> <td>3"</td> <td>CS30P</td> </tr> <tr> <td>4"</td> <td>CS40E</td> <td>4"</td> <td>CS40S</td> <td>4"</td> <td>CS40V</td> <td>4"</td> <td>CS40P</td> </tr> </tbody> </table>			EPDM		Silicon		Viton		PTFE/viton		Size	Code	Size	Code	Size	Code	Size	Code	1"	CS10E	1"	CS10S	1"	CS10V	1"	CS10P	1.1/2"	CS15E	1.1/2"	CS15S	1.1/2"	CS15V	1.1/2"	CS15P	2"	CS20E	2"	CS20S	2"	CS20V	2"	CS20P	2.1/2"	CS25E	2.1/2"	CS25S	2.1/2"	CS25V	2.1/2"	CS25P	3"	CS30E	3"	CS30S	3"	CS30V	3"	CS30P	4"	CS40E	4"	CS40S	4"	CS40V	4"	CS40P
EPDM		Silicon		Viton		PTFE/viton																																																													
Size	Code	Size	Code	Size	Code	Size	Code																																																												
1"	CS10E	1"	CS10S	1"	CS10V	1"	CS10P																																																												
1.1/2"	CS15E	1.1/2"	CS15S	1.1/2"	CS15V	1.1/2"	CS15P																																																												
2"	CS20E	2"	CS20S	2"	CS20V	2"	CS20P																																																												
2.1/2"	CS25E	2.1/2"	CS25S	2.1/2"	CS25V	2.1/2"	CS25P																																																												
3"	CS30E	3"	CS30S	3"	CS30V	3"	CS30P																																																												
4"	CS40E	4"	CS40S	4"	CS40V	4"	CS40P																																																												

Clamp fittings

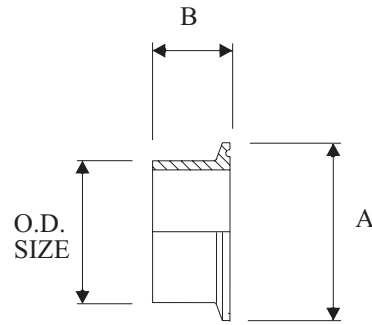
Dimensions - mm

Ferrule - standard

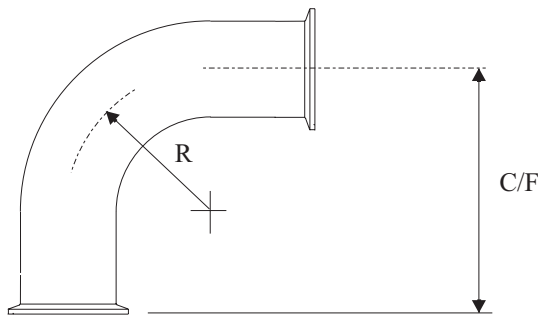


Size	A	B
1/2"	25.4	21.5
3/4"	25.4	21.5
1"	50.5	21.5
1.1/2"	50.5	21.5
2"	64.0	21.5
2.1/2"	77.5	21.5
3"	91.0	21.5
4"	119.0	21.5

Ferrule - long

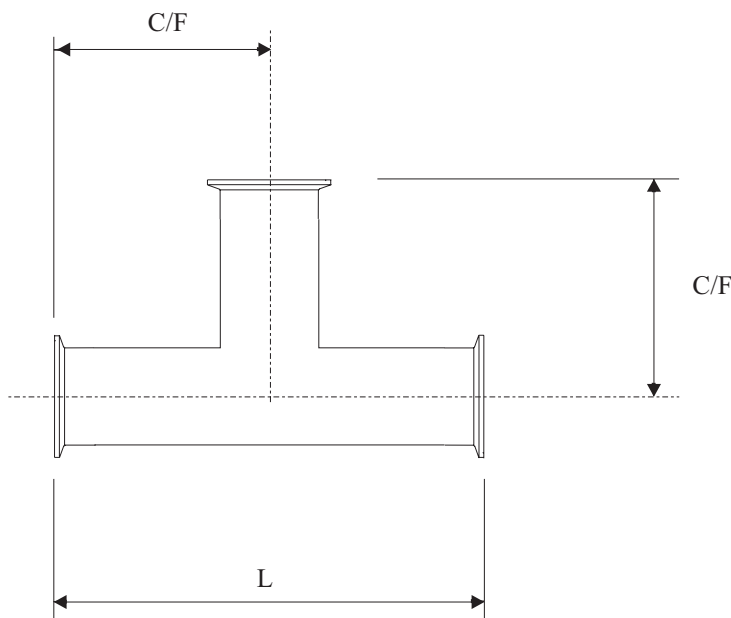


Size	A	B
1/2"	25.4	28.6
3/4"	25.4	28.6
1"	50.5	28.6
1.1/2"	50.5	28.6
2"	64.0	28.6
2.1/2"	77.5	28.6
3"	91.0	28.6
4"	119.0	28.6



Fitted bend

Size	C/F	R
1"	86.5	37.5
1.1/2"	106.5	57.0
2"	131.5	76.5
2.1/2"	156.5	95.3
3"	176.5	114.2
4"	216.5	152.5



Fitted tee

Size	C/F	L
1"	65.5	131
1.1/2"	85.5	171
2"	110.5	221
2.1/2"	135.5	271
3"	155.5	311
4"	216.5	433

To compliment our range of clamp fittings, we can supply ASTM A269/270 tube with internal / external polish. As specifications vary, this is normally polished to order to the required Ra value, please enquire.

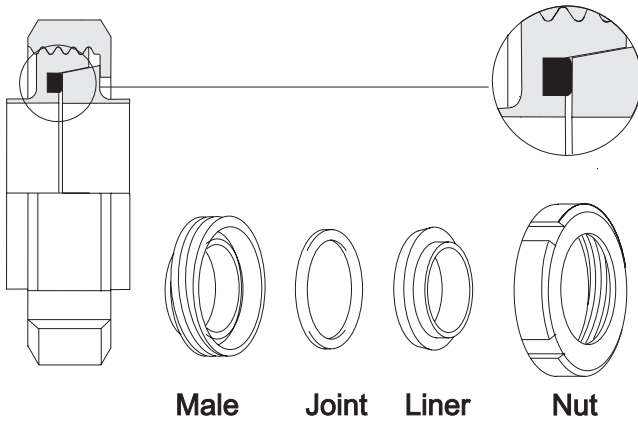


HYGIENIC PROCESS EQUIPMENT LTD

SPECIALISTS IN THE DESIGN AND SUPPLY OF STAINLESS STEEL FLUID HANDLING SYSTEMS AND COMPONENTS

Unit N2, Gildersome Spur, Gildersome, Morley, Leeds, West Yorkshire, LS27 7JZ
Tel: 01132 526712 Fax: 01132 538125

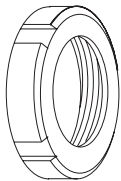
DIN Fittings for imperial O.D. tube



The DIN union is the German standard hygienic fitting. It is recognised by the round slotted nut, D section joint ring, and the coned recess in the male part. DIN union parts are manufactured to suit both DIN metric tube and imperial O.D. tube. The DIN union is probably the most robust hygienic union on the market but a crevice always exists between the faces of the male part and liner which cannot be properly cleaned in place.

DIN union parts conform generally to DIN 11851

Nut



304 st.st

Size	Code
1"	DN25
1.1/2"	DN40
2"	DN50
2.1/2"	DN65
3"	DN80
4"	DN100

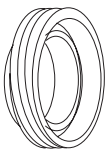
Welding liner



316 st.st.

Size	Code
1"	DLI10
1.1/2"	DLI15
2"	DLI20
2.1/2"	DLI25
3"	DLI30
4"	DLI40

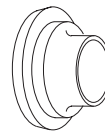
Welding male part



316 st.st.

Size	Code
1"	DMI10
1.1/2"	DMI15
2"	DMI20
2.1/2"	DMI25
3"	DMI30
4"	DMI40

Reducing liner



316 st.st.

Size	Code
1.1/2"x 1"	DRLI1510
2"x 1"	DRLI2010
2"x 1.1/2"	DRLI2015
2.1/2"x 1"	DRLI2510
2.1/2"x 1.1/2"	DRLI2515
2.1/2"x 2"	DRLI2520

Joint ring

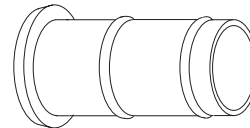


Section

Standard - nitrile
For EPDM use suffix E
For silicon use suffix S

Size	Code
1"	DJ25
1.1/2"	DJ40
2"	DJ50
2.1/2"	DJ65
3"	DJ80
4"	DJ100

Hose liner



316 st.st.

Size	Code
1"	DHI10
1.1/2"	DHI15
2"	DHI20
2.1/2"	DHI25
3"	DHI30
4"	DHI40

C spanner



Alloy

Size	Code
1"	DSU
1.1/2"	DSU
2"	DSU
2.1/2"	DSU
3"	DSU
4"	DSU

Blank liner

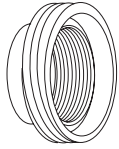


316 st.st.

Size	Code
1"	DB25
1.1/2"	DB40
2"	DB50
2.1/2"	DB65
3"	DB80
4"	DB100

DIN Fittings for imperial O.D. tube

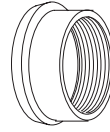
Expanding male part



304 st. st.

Size	Code
1"	DME10
1.1/2"	DME15
2"	DME20
2.1/2"	DME25
3"	DME30
4"	DME40

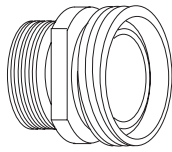
Expanding liner



304 st. st.

Size	Code
1"	DLE10
1.1/2"	DLE15
2"	DLE20
2.1/2"	DLE25
3"	DLE30
4"	DLE40

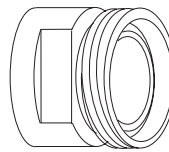
Male x BSP male adaptor



316 st.st.

Size	Code
1"	DA10M
1.1/2"	DA15M
2"	DA20M
2.1/2"	DA25M
3"	DA30M
4"	DA40M

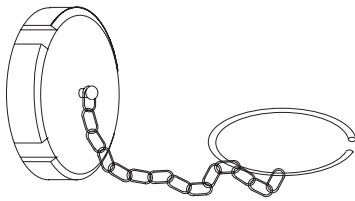
Male x BSP female adaptor



316 st.st.

Size	Code
1"	DA10F
1.1/2"	DA15F
2"	DA20F
2.1/2"	DA25F
3"	DA30F
4"	DA40F

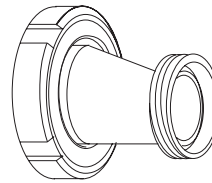
Blank nut & chain



304 st. st.

Size	Code
1"	DBN25
1.1/2"	DBN40
2"	DBN50
2.1/2"	DBN65
3"	DBN80
4"	DBN100

Reducing adaptors



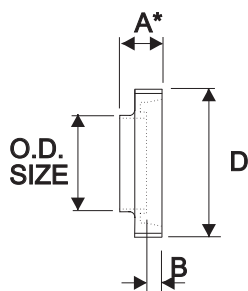
316 st.st.

Concentric or eccentric fittings as required

Special fabrications can be manufactured to order

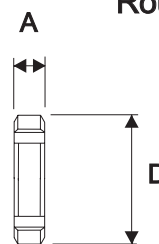
Nominal dimensions - union parts - mm

Weld male



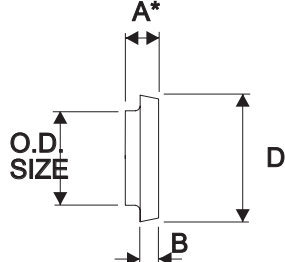
Size	A(S)	A(L)	B	D
1"	22	29	7	52
1.1/2"	22	33	7	65
2"	22	35	7	78
2.1/2"	25	40	8	95
3"	30	45	8	110
4"	30	54	10	130

Round nut



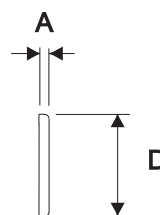
Size	A	D
1"	21	63
1.1/2"	21	78
2"	21	92
2.1/2"	25	112
3"	30	127
4"	31	148

Weld liner



Size	A(S)	A(L)	B	D
1"	18	22	10	44
1.1/2"	18	26	10	56
2"	20	28	11	68
2.1/2"	20	32	12	86
3"	20	37	12	100
4"	23	44	15	121

Joint ring



Size	A	D
1"	5	40
1.1/2"	5	52
2"	5	64
2.1/2"	5	81
3"	5	95
4"	5	114

* Please note :- Dimension A*, available in long and short pattern, specify by suffix L or S on code no

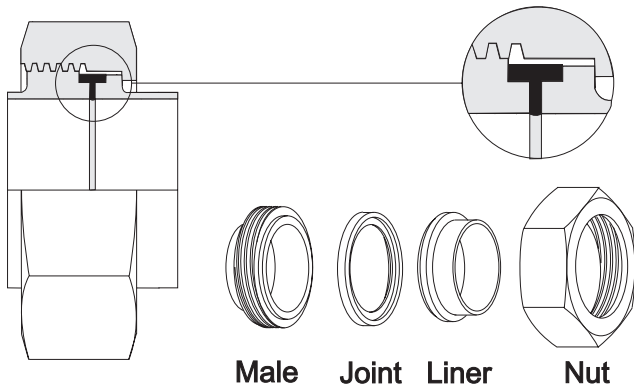


HYGIENIC PROCESS EQUIPMENT LTD

SPECIALISTS IN THE DESIGN AND SUPPLY OF STAINLESS STEEL FLUID HANDLING SYSTEMS AND COMPONENTS

Unit N2, Gildersome Spur, Gildersome, Morley, Leeds, West Yorkshire, LS27 7JZ
Tel: 01132 526712 Fax: 01132 538125

IDF Fittings

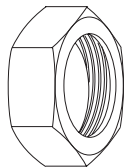


IDF (International Dairy Federation) sometimes referred to as ISS, (International Sanitary Standard) was introduced in the Sixties as the successor to RJT because of its crevice free assembly. It can be recognised by the wide hexagon nut or T section joint ring. The joint ring locates on both liner and male part but does not tend to stay in place when the union is disassembled, and can prove awkward. In cases where the union is dismantled frequently, the use of the L section joint ring will alleviate the problem as the joint ring will locate on one half

IDF union parts conform generally to BS 4825 part 4

Nut

Also available, round nuts slotted or plain



304 st.st.

Size	Code
1"	IN10
1.1/2"	IN15
2"	IN20
2.1/2"	IN25
3"	IN30
4"	IN40

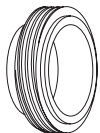
Welding liner



316L st.st.

Size	Code
1"	IL10
1.1/2"	IL15
2"	IL20
2.1/2"	IL25
3"	IL30
4"	IL40

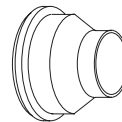
Welding male part



316L st.st.

Size	Code
1"	IM10
1.1/2"	IM15
2"	IM20
2.1/2"	IM25
3"	IM30
4"	IM40

Reducing liner



To reduce line size
316L st.st.

Size	Code
1.1/2"X 1"	IRL1510
2"X1"	IRL2010
2"x1.1/2"	IRL2015
2.1/2"x1"	IRL2515
2.1/2"x1.1/2"	IRL2520
2.1/2"x2"	IRL2520

Joint ring



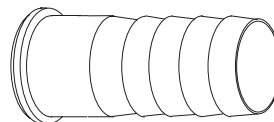
T section

L section

Standard - nitrile T section
for EPDM use suffix E
PTFE P
Viton V

Size	Code
1"	IJ10
1.1/2"	IJ15
2"	IJ20
2.1/2"	IJ25
3"	IJ30
4"	IJ40

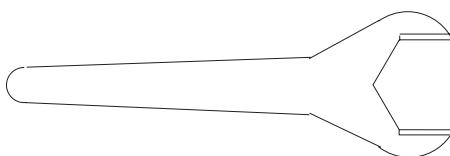
Hose liner



316L st.st.

Size	Code
1"	IH10
1.1/2"	IH15
2"	IH20
2.1/2"	IH25
3"	IH30
4"	IH40

Spanner



Alloy

Size	Code
1"	IS10
1.1/2"	IS15
2"	IS20
2.1/2"	IS25
3"	IS30
4"	IS40

Blank liner

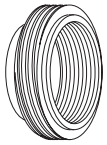


316L st.st.

Size	Code
1"	IB10
1.1/2"	IB15
2"	IB20
2.1/2"	IB25
3"	IB30
4"	IB40

IDF Fittings

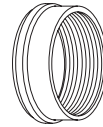
Expanding male part



316 st.st

Size	Code
1"	IME10
1.1/2"	IME15
2"	IME20
2.1/2"	IME25
3"	IME30

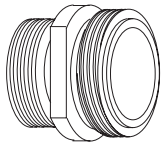
Expanding liner



316 st.st.

Size	Code
1"	ILE10
1.1/2"	ILE15
2"	ILE20
2.1/2"	ILE25
3"	ILE30

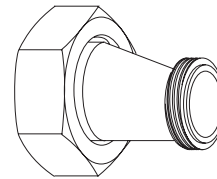
Male x BSP male adaptor



316 st.st.

Size	Code
1"	IA10M
1.1/2"	IA15M
2"	IA20M
2.1/2"	IA25M
3"	IA30M
4"	

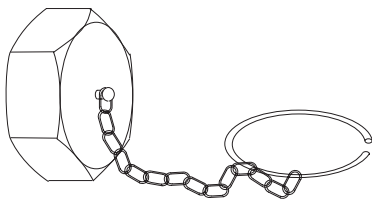
Reducing adaptors



Concentric or eccentric connections as required

316 st.st

Blank nut & chain



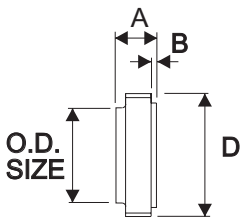
304/316 st.st.

Size	Code
1"	IBN10
1.1/2"	IBN15
2"	IBN20
2.1/2"	IBN25
3"	IBN30
4"	IBN40

Special fabrications can be manufactured to order

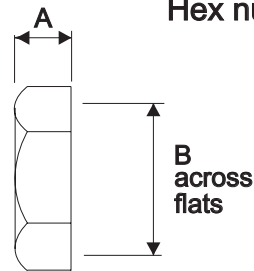
Nominal dimensions - union parts - mm

Weld male



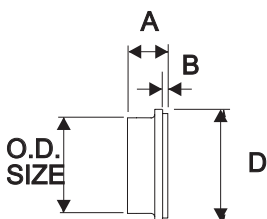
Size	A	B	D
1"	21.5	3	37.1
1.1/2"	21.5	3	50.7
2"	21.5	3	64.2
2.1/2"	21.5	3	77.7
3"	21.5	3	91.2
4"	30.0	3.2	125.9

Hex nut



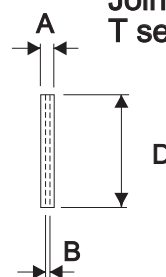
Size	A	B
1"	30	46.0
1.1/2"	30	60.0
2"	30	75.0
2.1/2"	30	90.0
3"	30	105.0
4"	35	133.0

Weld liner



Size	A	B	D
1"	21.5	3	33.8
1.1/2"	21.5	3	47.0
2"	21.5	3	60.5
2.1/2"	21.5	3	74.0
3"	21.5	3	87.5
4"	30.0	3	120.6

Joint ring T section



Size	A	B	D
1"	7.0	3	32.5
1.1/2"	7.0	3	46.0
2"	7.0	3	59.5
2.1/2"	7.0	3	73.2
3"	7.0	3	86.5
4"	9.5	5	119.0

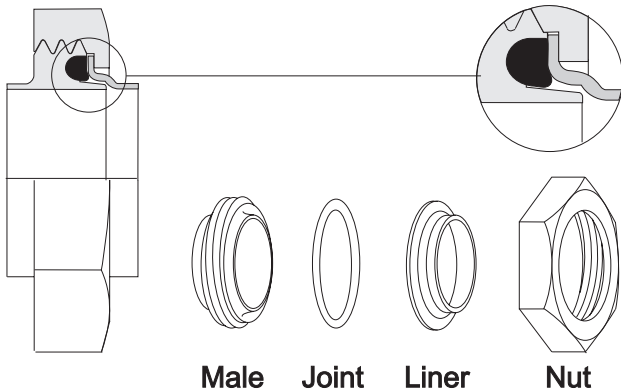


RJT fittings

HYGIENIC PROCESS EQUIPMENT LTD

SPECIALISTS IN THE DESIGN AND SUPPLY OF STAINLESS STEEL FLUID HANDLING SYSTEMS AND COMPONENTS

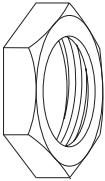
Unit N2, Gildersome Spur, Gildersome, Morley, Leeds, West Yorkshire, LS27 7JZ
Tel: 01132 526712 Fax: 01132 538125



The RJT union (Ring Joint Type) was the original hygienic fitting used in the U.K. It can be recognised by the slim hexagon nut and O section joint ring. Although still widely used because of comparative costs, it is not considered suitable for modern systems which are cleaned in place, because the crevice between the liner and the spigot on the male is difficult to clean. However, the positive location of the joint ring in the male part and the coarse whitworth thread make this a common choice where regular dismantling takes place for cleaning.

RJT union parts conform generally to B.S. 4825 part 5 (formerly B.S.1864)

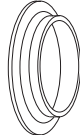
Nut



Size	Code
1"	RN10
1.1/2"	RN15
2"	RN20
2.1/2"	RN25
3"	RN30
4"	RN40

304 st.st.

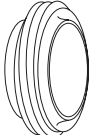
Welding liner



Size	Code
1"	RL10
1.1/2"	RL15
2"	RL20
2.1/2"	RL25
3"	RL30
4"	RL40

316L st.st.


Welding male part



Size	Code
1"	RM10
1.1/2"	RM15
2"	RM20
2.1/2"	RM25
3"	RM30
4"	RM40

316L st.st.


Reducing liner




Size	Code
1.1/2"x1"	RRL1510
2"x1"	RRL2010
2"x1.1/2"	RRL2015
2.1/2"x1"	RRL2510
2.1/2"x1.1/2"	RRL2515
2.1/2"x2"	RRL2520

To reduce line size 316L st.st.
For other sizes, please enquire

Joint ring

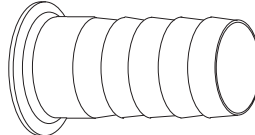


Section 

Size	Code
1"	RJ10
1.1/2"	RJ15
2"	RJ20
2.1/2"	RJ25
3"	RJ30
4"	RJ40

Standard - nitrile
for EPDM use suffix E
PTFE P
Viton V

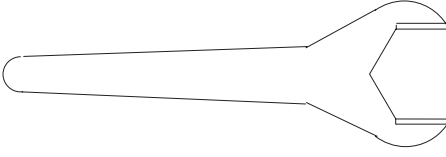
Hose liner



Size	Code
1"	RH10
1.1/2"	RH15
2"	RH20
2.1/2"	RH25
3"	RH30
4"	RH40

316L st.st.

Spanner



Size	Code
1"	RS10
1.1/2"	RS15
2"	RS20
2.1/2"	RS25
3"	RS30
4"	RS40

Alloy

Blank liner

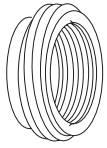


Size	Code
1"	RB10
1.1/2"	RB15
2"	RB20
2.1/2"	RB25
3"	RB30
4"	RB40

316L st.st.

RJT fittings

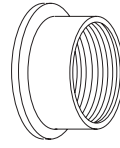
Expanding male part



316 st.st.

Size	Code
1"	RME10
1.1/2"	RME15
2"	RME20
2.1/2"	RME25
3"	RME30

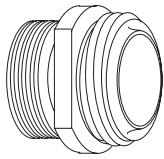
Expanding liner



316 st.st.

Size	Code
1"	RLE10
1.1/2"	RLE15
2"	RLE20
2.1/2"	RLE25
3"	RLE30

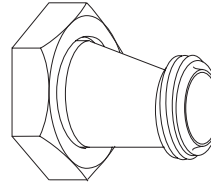
Male x BSP male adaptor



316 st. st.

Size	Code
1"	RA10M
1.1/2"	RA15M
2"	RA20M
2.1/2"	RA25M
3"	RA30M

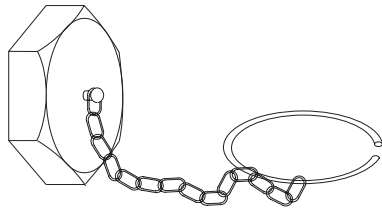
Reducing adaptors



Concentric or eccentric
Fittings as required

316L st.st.

Blank nut & chain



304/316 st. st.

Size	Code
1"	RBN10
1.1/2"	RBN15
2"	RBN20
2.1/2"	RBN25
3"	RBN30
4"	RBN40

Plastic cap (blank nut)*=N Plastic plugs (blank male)*=M



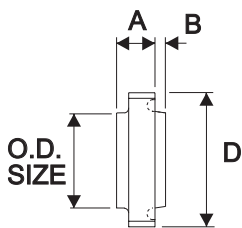
Food quality
polypropylene

Size	Code
1"	RB*P10
1.1/2"	RB*P15
2"	RB*P20
2.1/2"	RB*P25
3"	RB*P30
4"	RB*P40

Special fabrications can be manufactured to order

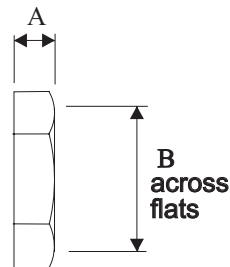
Nominal dimensions - union parts - mm

Weld male



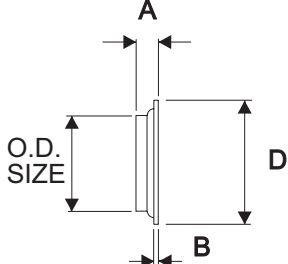
Size	A	B	D
1"	21.5	4.8	45.7
1.1/2"	21.5	4.8	58.4
2"	21.5	4.8	72.7
2.1/2"	21.5	4.8	85.4
3"	21.5	4.8	98.1
4"	21.5	4.8	123.5

Hex nut



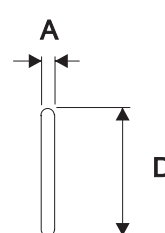
Size	A	B
1"	22.2	50.8
1.1/2"	22.2	65.0
2"	22.2	79.4
2.1/2"	22.2	92.1
3"	22.2	104.8
4"	22.2	130.2

Weld liner



Size	A	B	D
1"	12	2.5	41.3
1.1/2"	12	2.5	54.0
2"	12	2.5	66.7
2.1/2"	12	2.5	79.4
3"	12	2.5	92.1
4"	22	2.5	117.8

Joint ring



Size	A	D
1"	6.6	39.9
1.1/2"	6.6	52.6
2"	6.6	65.3
2.1/2"	6.6	78.0
3"	6.6	90.7
4"	6.6	116.1